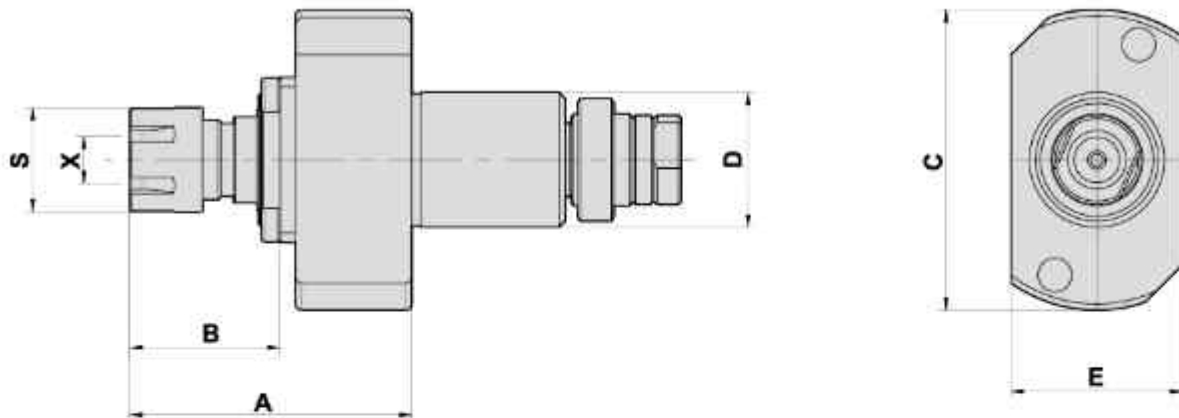


## MILLING AND DRILLING HEAD Sub Tool Post -End Surface Machining

TYPE    STAR

### 鑽銑刀座-背面端銑加工



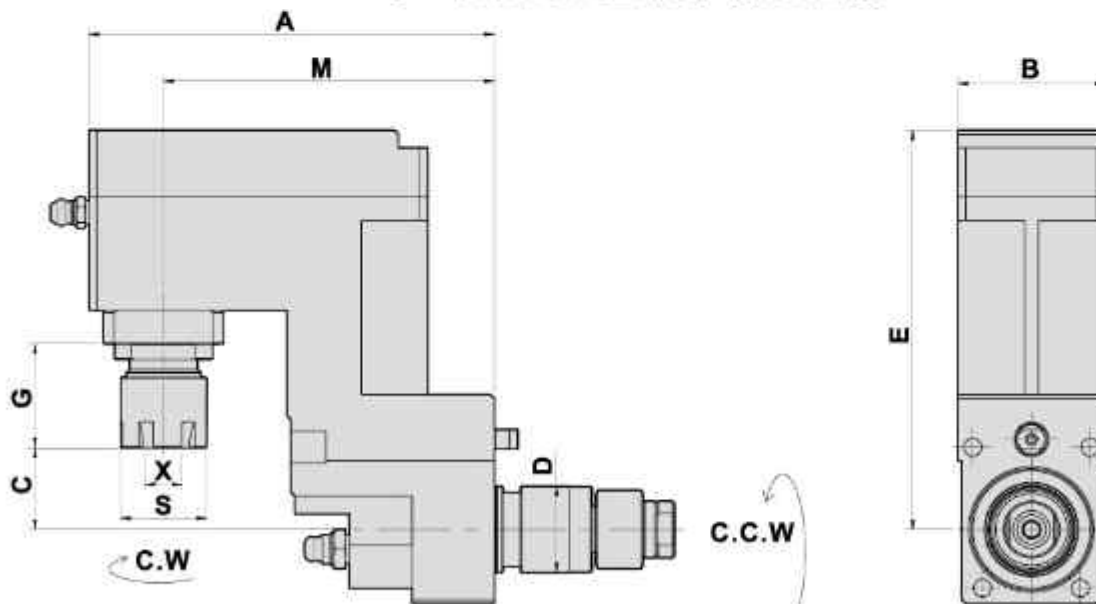
- To be used for collet DIN 6499
- External coolant supply
- Collet is not included

#### DIMENSIONS

Models	D	X Capacity	S	Maximum R.P.M.	A	B	C	E	Code No.	Order No.	(Kg) Weight
ECAS 12/20 /SR 16R/20R/20RIII	22	1-7 ER11M	17	6000	46	24.5	49	28	122601-000	ST-DA22-ER11M	0.4
/SR-10J/20J/32J	22	1-10 ER16M	22	6000	53	31.5	49	28	122602-000	ST-DA22-ER16M	0.4

## MILLING AND DRILLING HEAD OFFSET

### Sub Tool Post -Radius Machining    鑽銑刀座-背面側銑加工



- To be used for collet DIN 6499
- External coolant supply
- Collet is not included

#### DIMENSIONS

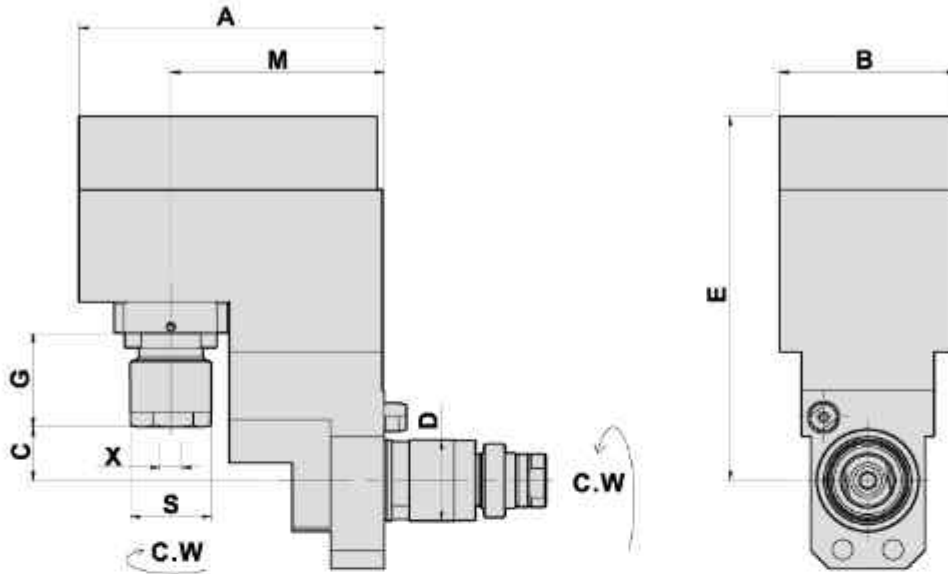
Models	D	X Capacity	S	Maximum R.P.M.	A	B	C	E	G	M	Code No.	Order No.	(Kg) Weight
SR20RIV/SW20	22	1-10 ER16M	22	4000	104	37.5	21	102	27	84.5	222602-000	ST-DB22-16M-84.5	2.1

### MILLING AND DRILLING HEAD OFFSET

Sub Tool Post -Radius Machining

TYPE STAR

### 鑽銑刀座-背面側銑加工



- To be used for collet DIN 6499
- External coolant supply
- Collet is not included

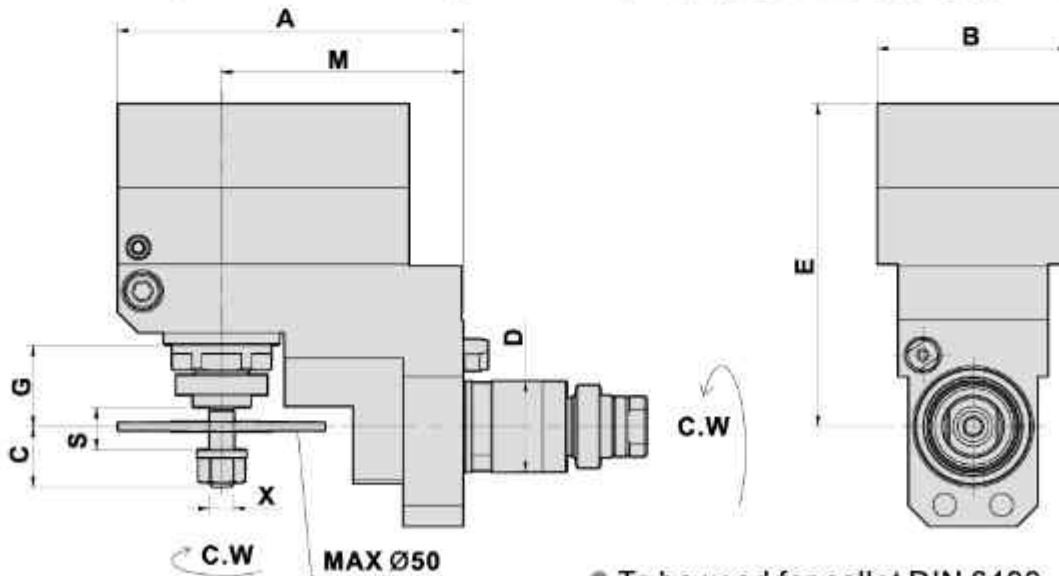
#### DIMENSIONS

Models	D	X Capacity	S	Maximum R.P.M.	A	B	C	E	G	M	Code No.	Order No.	(Kg) Weight
SR-10J/20J/ SR-20JN/ SR-20RIII	22	1-10 ER16M	22	4000	83	48	14.5	99	25.6	58	222606-000	ST-DB22-16M-58	2.2

### SHELL END MILLING CUTTERS

Sub Tool Post-Rotary Toolholder Slitting Machining

銑削刀座-背面加工鋸片座



- To be used for collet DIN 6499
- External coolant supply
- Collet is not included

#### DIMENSIONS

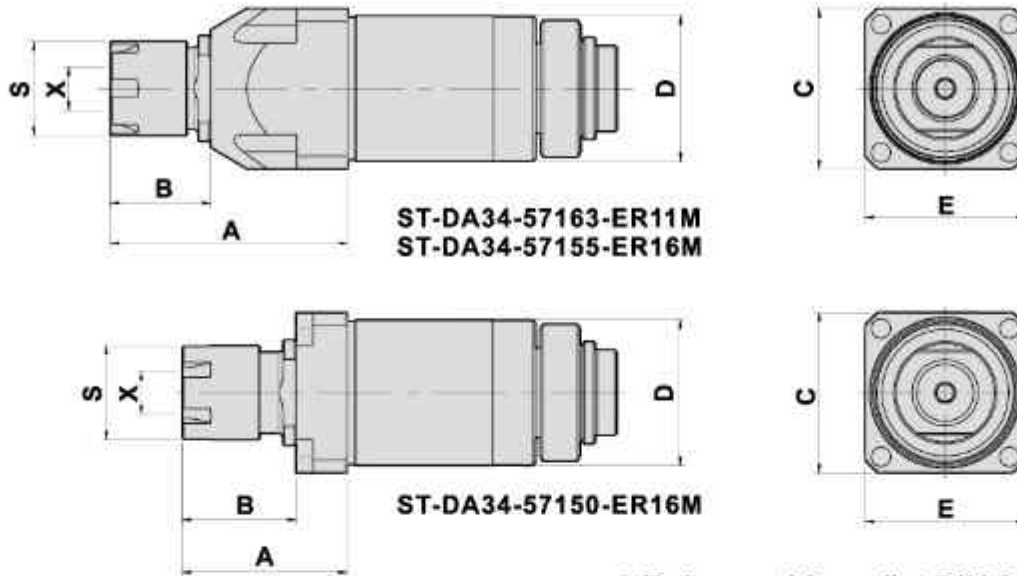
Models	D	X	Maximum R.P.M.	A	B	C	E	G	M	S	Code No.	Order No.	(Kg) Weight
SR-10J/20J/ SR-20JN/ SR-20RIII	22	6	4000	83	46	14.5	77.5	19.5	58	10	222603-000	ST-DB22-6C-58	1.6

### MILLING AND DRILLING HEAD

Main Tool Post-Radius Machining

TYPE STAR

### 鑽銑刀座-正面側銑加工



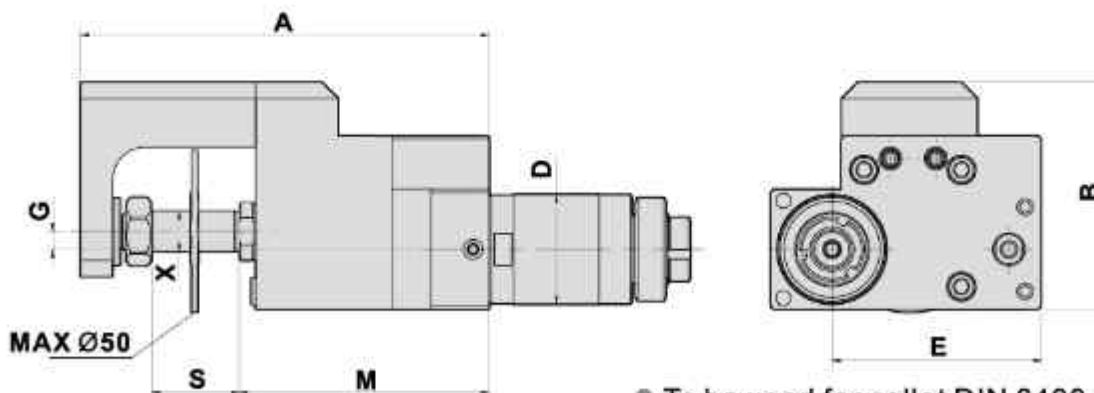
- To be used for collet DIN 6499
- External coolant supply
- Collet is not included

#### DIMENSIONS

Models	D	X Capacity	S	Maximum R.P.M.	A	B	C	E	Code No.	Order No.	(Kg) Weight
ECAS-20/ SR-20J/	34	1-7 ER11M	17	6000	45	22	37.5	37.5	134601-000	ST-DA34-57163-ER11M	0.6
SR-20JN/ SR-20RII/	34	1-10 ER16M	22	6000	56	24	37.5	37.5	134602-000	ST-DA34-57155-ER16M	0.7
SR-20RIII	34	1-10 ER16M	22	6000	39	27	37.5	37.5	134603-000	ST-DA34-57150-ER16M	0.5

### SHELL END MILLING CUTTERS

Main Tool Post-Rotary Toolholder Slitting Machining 銑削刀座-正面加工鋸片座



- To be used for collet DIN 6499
- External coolant supply
- Collet is not included

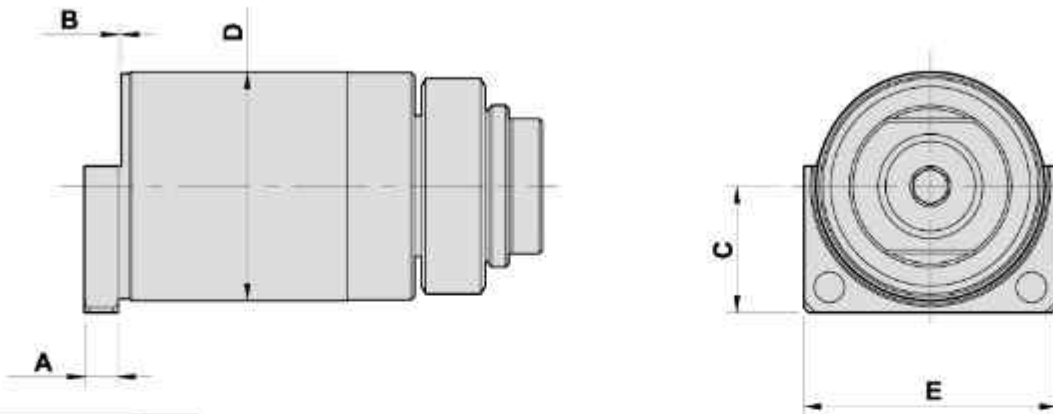
#### DIMENSIONS

Models	D	X	Maximum R.P.M.	A	B	E	G	M	S	Code No.	Order No.	(Kg) Weight
ECAS20/ SR-20J/SR-20RII	34	12.7	6000	126	70	64.5	5.5	77	27	134606-000	DA34-12.70 CUT	2.6

### LDLER AXIS

TYPE STAR

### 惰輪軸心

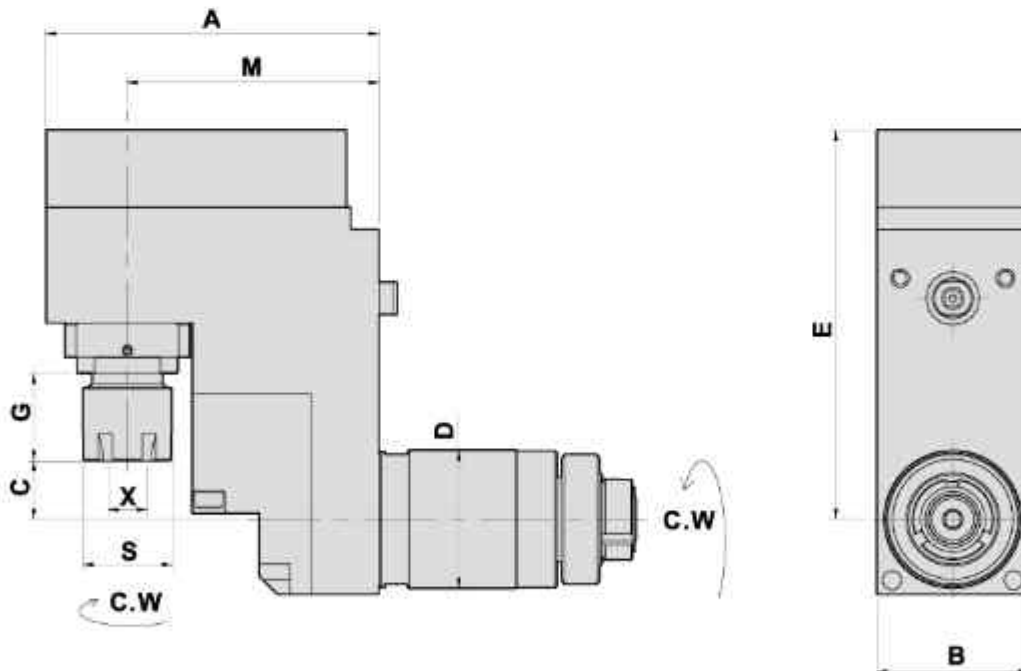


#### DIMENSIONS

Models	D	A	B	C	E	Code No.	Order No.	(Kg) Weight
SR20R	34	5	0.5	18.75	37.5	134608-000	STAR-DA34-FF	0.5

### MILLING AND DRILLING HEAD OFFSET

Main Tool Post-End Surface Machining 鑽銑刀座-正面端銑加工



- To be used for collet DIN 6499
- External coolant supply
- Collet is not included

#### DIMENSIONS

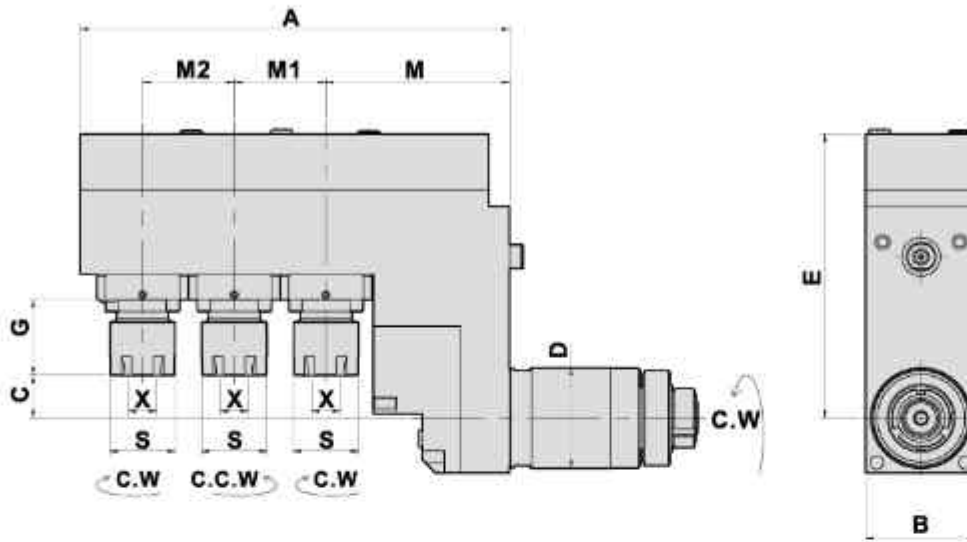
Models	D	X Capacity	S	Maximum R.P.M.	A	B	C	E	G	M	Code No.	Order No.	(Kg) Weight
ECAS-12/ ECAS-20	34	1-10 ER16M	22	4000	82	37.5	14.5	96	22	62	234601-000	STAR-BR34-16M-62	2.1

### DRILLING AND MILLING HEAD TRIPLE HEADS-OFFSET

Main Tool Post-End Surface Machining

TYPE STAR

### 三頭鑽銑刀座-正面端銑加工



- To be used for collet DIN 6499
- External coolant supply
- Collet is not included

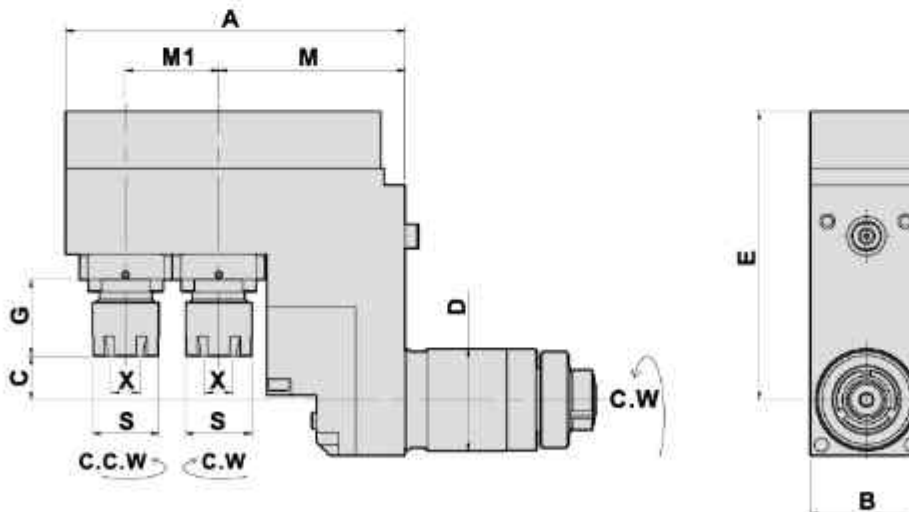
#### DIMENSIONS

Models	D	X Capacity	S	Maximum R.P.M	A	B	C	E	G	M	M1	M2	Code No.	Order No.	(Kg) Weight
SR-20J/SR-20JN / SR-20RII/SR-20RIII	34	1-10 ER16M	22	4000	145	37.5	14.5	96	25.5	62	31	31	234603-000	STAR-BR34-16M-3C	3.3

### DRILLING AND MILLING HEAD DOUBLE HEADS-OFFSET

Main Tool Post-End Surface Machining

雙頭鑽銑刀座-正面端銑加工



- To be used for collet DIN 6499
- External coolant supply
- Collet is not included

#### DIMENSIONS

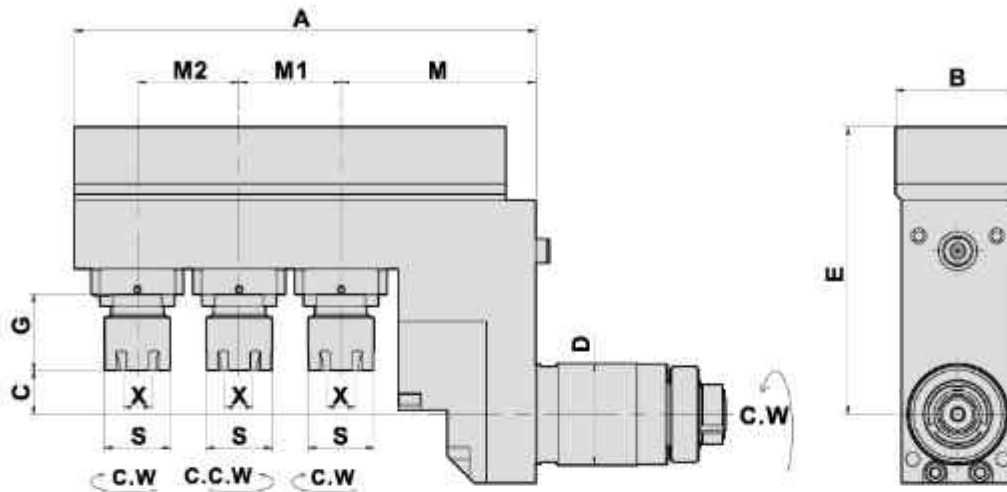
Models	D	X Capacity	S	Maximum R.P.M	A	B	C	E	G	M	M1	Code No.	Order No.	(Kg) Weight
SR-20J/SR-20JN / SR-20RII/SR-20RIII	34	1-10 ER16M	22	4000	113	37.5	14.5	96	25.5	62	31	234602-000	STAR-BR34-16M-2C	2.7

### MILLING AND DRILLING HEAD TRIPLE HEADS-OFFSET

Main Tool Post-End Surface Machining

TYPE STAR

### 三頭鑽銑刀座-正面端銑加工



- To be used for collet DIN 6499
- External coolant supply
- Collet is not included

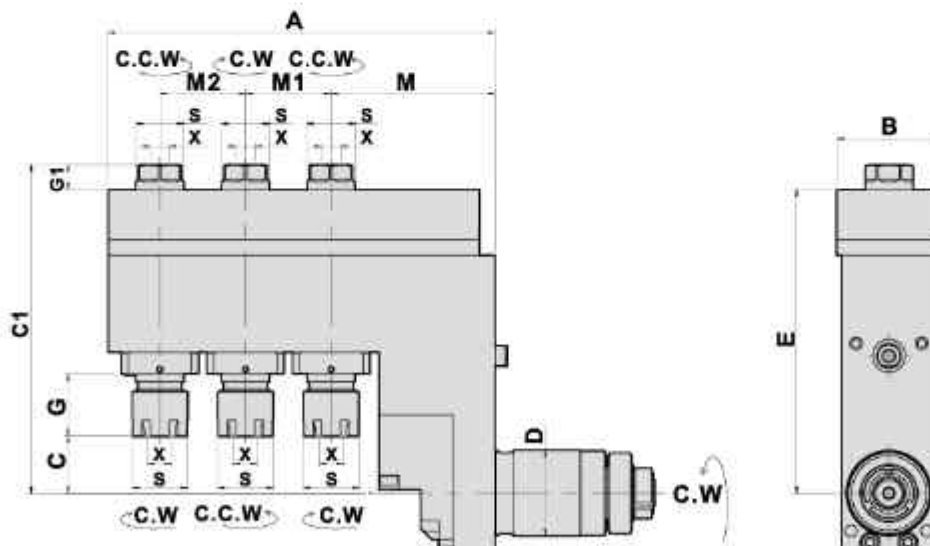
#### DIMENSIONS

Models	D	X Capacity	S	Maximum R.P.M	A	B	C	E	G	M	M1	M2	Code No.	Order No.	(Kg) Weight
SR-32J	34	1-10 ER16M	22	4000	154	41.5	14.5	96	25.5	65	34	34	234612-000	STAR-BR34-16M-3C-32J	3.4

### DRILLING AND MILLING HEAD MULTI HEADS-OFFSET

Main Tool Post/Sub Tool Post-End Surface Machining

### 多頭鑽銑刀座-正背面端銑加工



- To be used for collet DIN 6499
- External coolant supply
- Collet is not included

#### DIMENSIONS

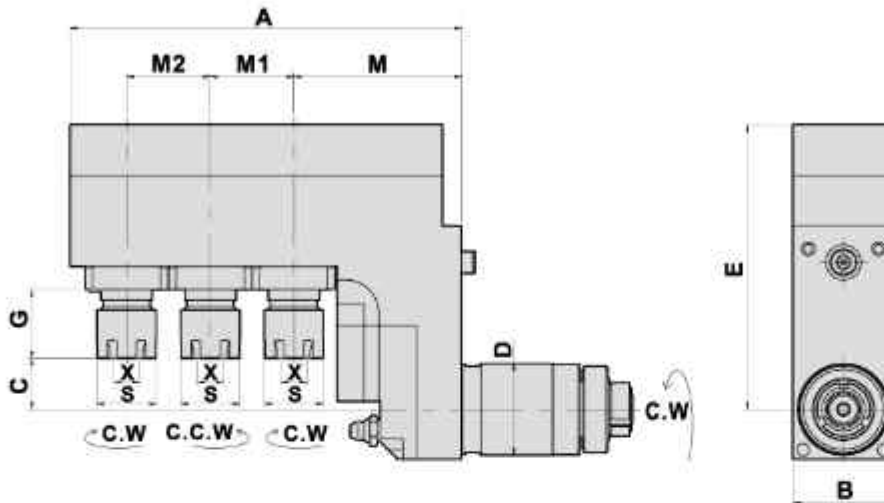
Models	D	X Capacity	S	Maximum R.P.M	A	B	C	C1	E	G	G1	M	M1	M2	Code No.	Order No.	(Kg) Weight
SR-32J	34	1st-ER16M	22	4000	153.5	41.5	22.5	130.5	120.5	25	10	65	34	34	234606-000	STAR-BR34-11-16M-6C-32J	4.2
		2nd-ER11	19														

### MILLING AND DRILLING HEAD TRIPLE HEADS-OFFSET

Main Tool Post-End Surface Machining

TYPE STAR

### 三頭鑽銑刀座-正面端銑加工



- To be used for collet DIN 6499
- External coolant supply
- Collet is not included

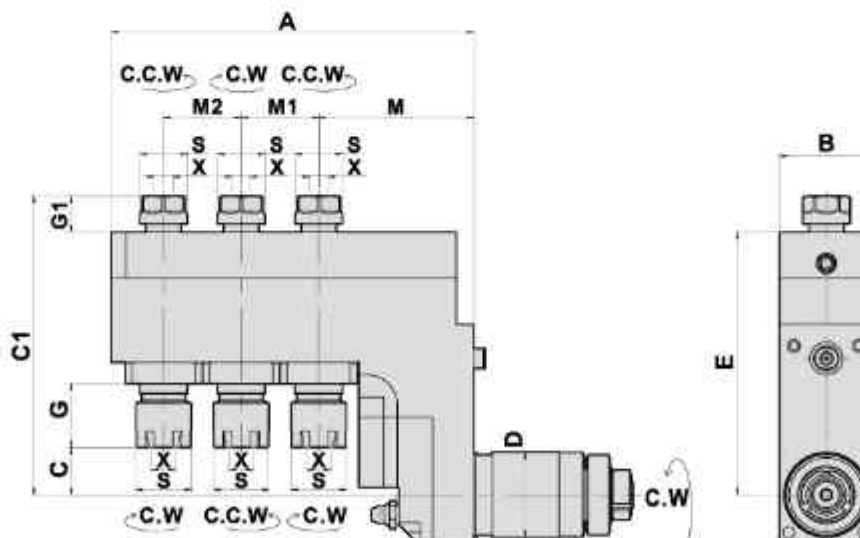
#### DIMENSIONS

Models	D	X Capacity	S	Maximum R.P.M	A	B	C	E	G	M	M1	M2	Code No.	Order No.	(Kg) Weight
SB20R	34	1-10 ER16M	22	4000	145	37.5	18.9	105.5	25.6	62	31	31	234615-000	STAR-BR34-16M-3C-SB	3.2

### DRILLING AND MILLING HEAD DOUBLE HEADS-OFFSET

Main Tool Post/Sub Tool Post-End Surface Machining

### 多頭鑽銑刀座-正背面端銑加工



- To be used for collet DIN 6499
- External coolant supply
- Collet is not included

#### DIMENSIONS

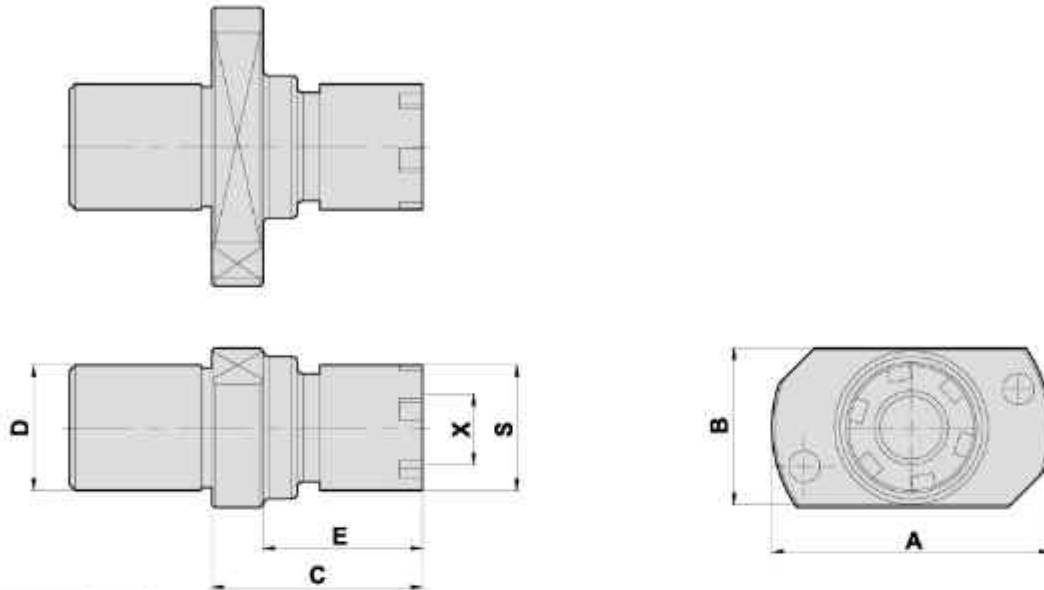
Models	D	X Capacity	S	Maximum R.P.M	A	B	C	C1	E	G	G1	M	M1	M2	Code No.	Order No.	(Kg) Weight
SB20R/ SR-20RII	34	1st-ER16M 2nd-ER11	22 19	4000	145	37.5	18.9	119.4	104.9	25.6	14.5	62	31	31	234613-000	STAR-BR34-11-16M-6C-SB	3.4

### ER STATIC TOOL HOLDER

Sub Tool Post-End Surface Machining

TYPE STAR

### ER 固定刀座 - 背面鑽孔座



#### DIMENSIONS

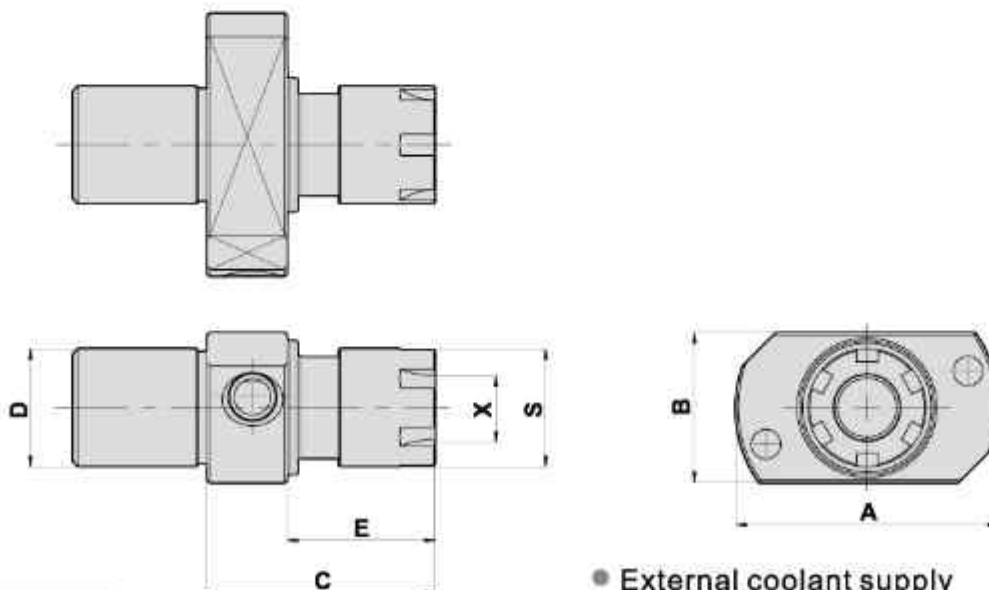
● External coolant supply

D	X Capacity	S	A	B	C	E	Code No.	Order No.	(Kg) Weight
22	1-10 ER16M	22	49	28	40.5	31.5	622011-000	ST-B5172-ER16M	0.2
22	1-13 ER20M	22	49	28	38	29	622017-000	ST-B5172-ER20M	0.3

### ER STATIC TOOL HOLDER

Sub Tool Post-End Surface Machining

### ER 固定刀座 - 背面鑽孔座



#### DIMENSIONS

● External coolant supply  
● Internal supply

D	X Capacity	S	A	B	C	E	Code No.	Order No.	(Kg) Weight
22	1-10 ER16M	22	49	28	42.5	27.5	622019-000	ST-B5172-ER16M-A	0.2

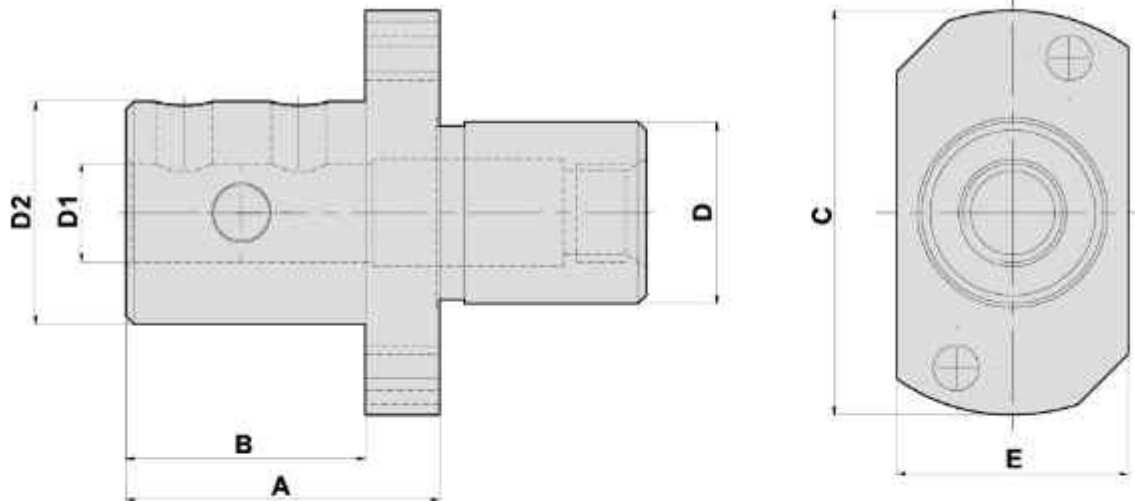


### BORING BAR HOLDER

Sub Tool Post-End Surface Machining

TYPE STAR

### 內孔刀座 - 背面車刀座



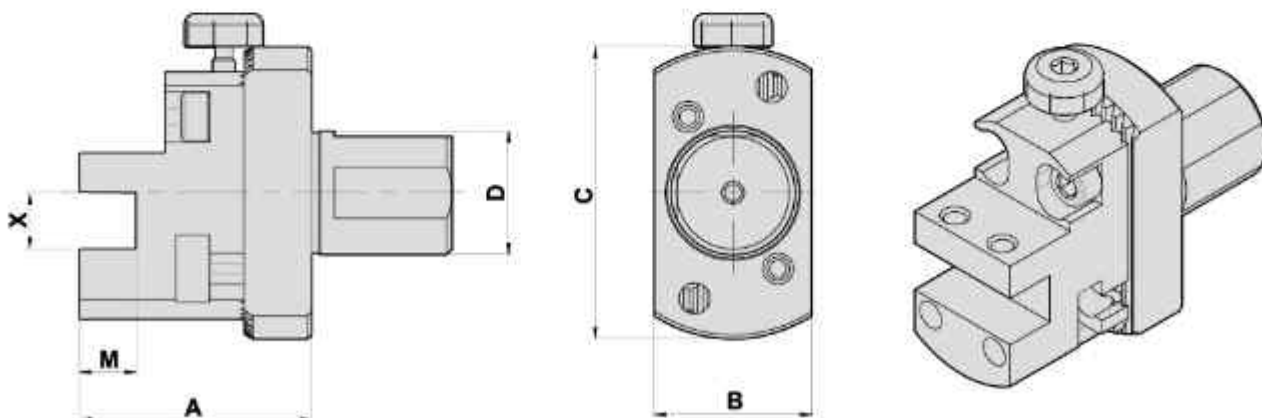
#### DIMENSIONS

● External coolant supply

D	A	B	C	E	D1	D2	Code No.	Order No.	(Kg) Weight
22	38	29	49	28	3	16	317091-000	ST-B5172-3	0.3
22	38	29	49	28	4	23	314091-000	ST-B5172-4	0.3
22	38	29	49	28	5	20	316091-000	ST-B5172-5	0.3
22	38	29	49	28	6	27	312091-000	ST-B5172-6	0.3
22	38	29	49	28	8	27	301091-000	ST-B5172-8	0.3
22	38	29	49	28	10	27	302091-000	ST-B5172-10	0.3
22	38	29	49	28	12	27	303091-000	ST-B5172-12	0.3
22	38	29	49	28	16	27	304091-000	ST-B5172-16	0.3

### TURNING HOLDER

Sub Tool Post-End Surface Machining 外徑刀座 - 背面車刀座



#### DIMENSIONS

D	X	A	B	C	M	Code No.	Order No.	(Kg) Weight
22	10	41.3	28	52	10	402092-000	STAR-22-C10-SR	0.4